

New Stainless Steel Commercial Steam Unit FOR MODELS CU360-CU1400

Protects against external rust – Prolongs life of unit

Mr.Steam generators meet cULus and ASME requirements for low-pressure operation – adherence to Code and quality standards for outstanding durability and safety.



CU1000 shown

COMMERCIAL STEAM GENERATORS SPECIFICATION CHART

Model	Total Room Volume (cu. ft.)	PH	KW	Ship Wt. (lbs)	Shipping Dim. (in)			List Price
					L	W	H	
CU360*	Up to 360	3	9	200	36	26	43	\$4400
CU360*	Up to 360	1	9	200	36	26	43	4500
CU500*	361-500	3	12	200	36	26	43	4900
CU500*	361-500	1	12	200	36	26	43	5100
CU750*	501-750	3	18	200	36	26	43	5200
CU750*	501-750	1	18	200	36	26	43	5400
CU1000*	751-1000	3	24	200	36	26	43	6700
CU1000*	751-1000	1	24	200	36	26	43	6900
CU1250*	1001-1250	3	30	200	36	26	43	7300
CU1400*	1251-1400	3	36	200	36	26	43	7400
CU2000	1401-2000	3	48	300	37	31	52	9000
CU2500	2001-2500	3	60	300	36	26	43	9300
CU3000	2501-3000	3	72	320	36	26	43	9400
CU4500	3001-4500	3	108	525	47	37	74	14,000



All CU Commercial Steambath Generators are available in 208/3, 240/3 and 480/3 and other Voltage/Phase combinations. Only models CU360–CU1000 are available in 208/1 and 240/1 as priced. Specify Voltage/Phase when ordering. Models CU360–CU1400 measure 20”L x 20”W x 38”H. Models CU2000–CU3000 measure 33”L x 24”W x 44”H. Model CU4500 measures 34”L x 28”W x 59”H. Dimensions are approximate.

*Models CU360–CU1400 include Stainless Steel jacket



Digital 1 Control



Commercial Steamhead



Steam Solenoid Valve

Digital 1™ Control Package

The Digital 1 Control maintains selected room temperature and features a high limit shut-off. Provides Steam-On-Demand® for consistent room temperature comfort and control.

IMPORTANT:

- If more than one room is being serviced by one (1) CU generator, the appropriate CU1-Digital1 or CU2-Digital1 Control Package must be specified for EACH room
- See Page 23 for sizing and selection guidelines for CU generators
- Note all “IMPORTANT” guidelines on page 23 when one (1) CU generator is servicing more than one (1) room

Product Number	For Generator Models	Price
----------------	----------------------	-------

CU1-DIGITAL1	CU360 - CU1400	\$950
---------------------	----------------	--------------

Includes one Digital 1 Control, one (1) AromaSteam steamhead with acrylic shield and one (1) Steam Solenoid Valve

CU2-DIGITAL1	CU2000 - CU4500	1300
---------------------	-----------------	-------------

Includes one Digital 1 Control, two (2) AromaSteam steamheads with acrylic shields and two (2) Steam Solenoid Valves

Optional Operating Equipment

Automatic Blowdown System



- Programmable 24 hour/7 day time cycle
- Boiler-grade heavy duty motorized self-cleaning
- Industrial steam-rated 100 PSIG ball valve with Teflon® Seals
- Nickel plated brass valve body with stainless steel ball and stem
- Owner/operator schedules start-up/shut-down, and blowdown times from generator

Product No.	CU Generator Model	Price
CU81600-1	CU360-1400	\$1350
CU81600-2	CU2000-3000	1450
CU81600-3	CU4500	1650

AromaFlo® Aroma Oil Delivery System



- Electronic oil delivery system evenly infuses scent into steam
- Complete with electronic metering control pump, hoses and oil atomizer
- Can be controlled directly from an eTEMPO/Plus® keypad
- AromaSteam System oils available in 2.6 gallon bottles. (see below)
- 120v/60hz. / cULus Listed

CU AROMAFLO \$950

AromaFlo® Aroma Oils



- 2.6 gallon bottle (10 liters)
- Specially formulated and packaged aroma oils for use with AromaFlo System
- Organic oils
- Water based
- Non-hazardous
- Earth-friendly

CU-OIL1	Eucalyptus	\$285
CU-OIL2	Lavender	350

ASME Code Blowdown Tank



- Essential equipment for automatic blowdown maintenance where building Codes require maximum 140° F discharge
- Blowdown separators are built to ASME Section VIII
- Separators reduce temperature and pressure to insure a safe discharge of water and sludge
- Designed to utilize a water seal at the outlet which reduces outlet temperature to a safe discharge level
- No electrical hookup is required
- Complete with temperature gauge, pressure gauge, and gauge glass assembly
- ASME Code UM vessel

Product No.	Generator Model	Dimensions	Shipping Wt.	Price
CU-BDT-ASME36	CU360-3000	36"H x 16" Dia.	140 lbs.	\$2350
CU-BDT-ASME42	CU4500	42"H x 16" Dia.	255 lbs.	3475

Additional CU Accessories

CU Light

Robust, surface mounted architectural light. Aluminum body finished in brushed chrome. cULus wet-locations listed with a fluorescent compact bulb. Energy Star rated, ADA 8.5" diameter x 4" height.

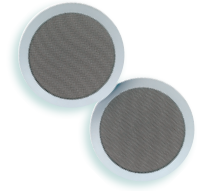
CU LIGHT \$575



CU Speakers

Designed for use inside the shower enclosure. Complete with two 8 1/2" diameter flush-mount two-way speakers, polypropylene cones, and ABS frames with white powder-coated grills. Suitable for most sources of audio input. Rated 80W peak power with full range sound. 40 watts RMS and 8 ohms impedance. cULus Listed

CU SPEAKER \$350



CU AromaSteam™ Steamhead

Full 3/4" NPT, 100% solid brass, complete with polycarbonate cover. Available in polished chrome. Included with a Digital 1" Temperature Control System. Order only if additional or replacement steamhead is required.

CU 103984 PC \$125



CU Steam Stop®

Emergency stop switch to electronically shut down the steam generator. Multiple Steam Stop switches can be used with one steam generator. Water-resistant, IP-69K rating suitable for use inside or outside the steam room.

CU STEAMSTOP \$325



Digital Timer - Must use with Steam Vent PN 104072

30-minute digital timer provides guests in your steam room with accurate, easy to use timers so that they can safely time their steam sessions up to 30 minutes. Only for installation outside the steamroom.

CU 99216DIG \$485



Mechanical Timer - Must use with Steam Vent PN 104072

30-minute mechanical timer. Only for installation outside the steamroom. cULus Listed

CU 99216B \$70



CU Alarm

Audible alarm sounds in the event the steam room maximum set temperature is exceeded. Suitable for use with Digital 1. Choose from multiple alarm sounds. Mounting in a standard 4x4 electrical box for installation. cULus Listed for general signaling, indoors and outdoors.

IMPORTANT: CU Alarm not for installation inside the steam room.

NOTE: Pressing the CU Steam Stop will cause the alarm to sound.

CU ALARM \$175



Auxiliary Manual Reset Low Water Cutoff

Many states (including GA, IA, MA, NC, TX, WA) and local jurisdictions require an independent, manual reset, second low-water cutoff control as standard. Verify code requirements in your area.

CU 81017MR \$575

Transformer 1/4 KVA

Provides control circuit voltage where 120V is inaccessible or costly to provide. cULus Listed

CU 99331C 240V \$425

CU 99331F 480V 485