

Ultimate Home Design

Circulation - 40,000

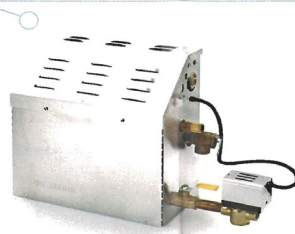
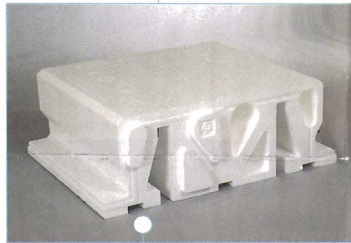
product showcase

New to the neighborhood

Sarah Scaglione

Mr. Steam® makes the home spa an eco-friendly oasis. When moving toward conserving energy and natural resources, consumers can also look to the water and energy saving benefits of a steam shower. A typical Mr.Steam steam system uses less than five gallons of water for a 30-minute steambathing session. This represents a 75-gallon reduction in water

usage as compared to a whirlpool bath, providing homeowners a high quality alternate. Made of naturally corrosion resistant, 100-percent recyclable stainless steel, the Mr.Steam residential steambath products are also an environmentally sound choice for the home spa. For more information phone 1 800 76 STEAM or visit www.mrsteam.com.



WaterFurnace, International, Inc. With energy costs and carbon emissions on the rise, homeowners are looking for more energy-efficient solutions that can save them money and protect the environment. WaterFurnace geothermal heating and cooling systems have answered this need by using the free energy found

beneath the ground instead of fossil fuels to save homeowners up to 70 percent on their utility bills and reduce their carbon footprint. With added comfort, whisper-quiet operation, and improved indoor air quality a WaterFurnace geothermal system is a smart investment. For more information on this innovative energy solution, or to contact a local WaterFurnace Dealer, visit www.waterfurnace.com.



Amvic Building System The AmDeck Floor & Roof System, is a modular, lightweight stay in place form used to construct concrete floors and roofs. The system provides structural strength through reinforced concrete and insulation through EPS. The system utilizes 10-inch lightweight steel framing studs to carry the temporary construction loads and act as furring strips for attachments. Shoring for AmDeck can be placed up to 20 feet on-center, which is four times less than for competing products. One-way concrete floor/roof joists formed with this system can easily span up to 40 feet. AmDeck is an excellent complement for ICF construction, but can also be used easily in conjunction with other methods of construction. For more information, phone 877 470 9991 or visit www.amvicsystem.com.



Rocky Top Building Products offers a complete line of Engineered Wood Products. Rocky Top's AdvanTech™ Flooring & Sheathing, Anthony I-joists and Glulams, Norbord Rimboard, and West Fraser™ LVLs enable them to meet any structural need. Rocky Top also offers a full-service design team to assist you in planning your project for structural purposes. Accurate and detailed take-offs are guaranteed to you within five days or less. Phone Rocky Top today at 800 274 3443 or visit us at www.rockytopbbp.com for more information on their EWP program.

10

Ultimate Home Design • Issue 11 • September/October 2007



mr.steam®